



Roxbury

8-in-1 Turntable Music Center

with AudioStream™

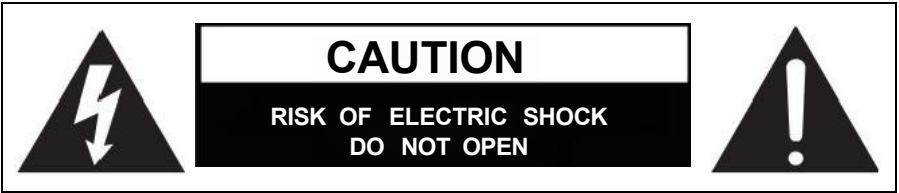
RWRP-3000



Instruction Manual

Please read carefully before use and keep for future reference.

WARNING



CAUTION: TO REDUCE THE RISK OF ELECTRIC SHOCK,DO NOT REMOVE COVER(OR BACK).NO USER SERVICEABLE PARTS INSIDE.REFER SERVICING TO QUALIFIED SERVICE PERSONNEL.



DANGEROUS VOLTAGE: The lightning flash with arrowhead symbol within an equilateral triangle is intended to alert the user to the presence of uninsulated dangerous voltage within the product's enclosure that may be of sufficient magnitude to constitute a risk of electric shock to persons.



ATTENTION: The exclamation point within an equilateral triangle is intended to alert the user to the presence of important operating and maintenance (servicing) instructions in the literature accompanying the appliance.



WARNING: Invisible laser radiation when open and interlock failed or defeated. Avoid direct exposure to laser beam.



This equipment is a Class II double insulated electrical appliance. It has been designed in such a way that it does not require a safety connection to electrical earth.

Important Safety Instructions

1. Read these instructions-All the safety and operating instructions should be read before this product is operated.
2. Keep these instructions-The safety and operating instructions should be retained for future reference.
3. Heed all warnings-All warnings on the appliance and in the operating instructions should be adhered to.
4. Follow all instructions-All operating and use instructions should be followed.
5. Do not use this apparatus near water-The appliance should not be used near water or moisture-for example, in a wet basement or near a swimming pool.
6. Clean only with a dry cloth.
7. Do not block any ventilation openings. Install in accordance with the manufacturer's instructions.
8. Do not install near any heat sources such as radiators, heat registers, stoves, or other devices (including amplifiers) that produce heat.
9. Protect the power cord from being walked on or pinched-particularly at the plugs, power outlets, and at the point where they exit from the apparatus.
10. Only use attachments or accessories specified by the manufacturer.

11. Use only with the cart, stand, tripod, bracket, or table specified by the manufacturer, or sold with the apparatus. When a cart or rack is used, use caution when moving the cart/apparatus combination to avoid injury from tip-over.



12. Unplug the apparatus during lighting storms or when unused for long periods of time.

13. Refer all servicing to qualified personnel. Servicing is required when the apparatus has been damaged in any way, such as when a power supply cord or plug is damaged, liquid has been spilled or objects have fallen into the device, the device has been exposed to rain or moisture, the device does not operate normally, or the device has been dropped.

14. If the plug is used as a disconnect device, the disconnect device must stay easily operable.

15. **WARNING:** To reduce the risk of fire or electric shock, do not expose this device to rain or moisture. The device shall not be exposed to dripping or splashing, and no objects filled with liquids, such as vases, shall be placed on the device.

16. Use the equipment only in moderate climates.

17. The ventilation should not be impeded. Do not cover the ventilation openings with items, such as newspapers, tablecloths, or curtains.

18. Do not place open flame sources, such as lighted candles, on the apparatus.

19. The symbol with ~ indicates AC voltage.

20. **CAUTION:** These servicing instructions are for use by qualified service personnel only. To reduce the risk of electric shock do not perform any servicing other than that contained in the operating instructions unless you are qualified to do so.

TABLE OF CONTENTS

FEATURES.....	6
SPECIFICATIONS	6
PRODUCT OVERVIEW	7
SET-UP & BASIC OPERATION.....	8
RADIO OPERATION.....	9
CD OPERATION.....	9
AUX-IN OPERATION.....	10
USB OPERATION	10
CASSETTE TAPE OPERATION	11
VINYL RECORD OPERATION	12
BLUETOOTH® OPERATION	13
CARE & MAINTENANCE	14
TROUBLESHOOTING GUIDE	17
FCC NOTICE.....	18
CAUTION ON MODIFICATIONS	19
SUPPORT.....	19

FEATURES

Introducing Roxbury 8-in-1 Turntable Music Center with AudioStream™ - a harmonious fusion of nostalgia and modernity. Immerse yourself in the captivating world of vinyl records, from 33⅓ to 45 and 78 RPM. Embracing the convenience of modern technology, this all-in-one Music Center now includes USB Playback and recording functionality. Preserve your cherished vinyl collection by recording record tracks directly to a USB drive. Enjoy seamless wireless music streaming via Bluetooth®. Roxbury also has a CD Player, and FM radio tuner. With built-in stereo speakers and a timeless retro design, It's the ultimate way to relive classical music while staying connected to the modern world. Elevate your music experience today!

- **3-SPEED TURNTABLE** – Enjoy your favorite records with a turntable that supports all three speeds: 33⅓, 45, and 78 RPM.

- **AUDIOSTREAM™ (Bluetooth Out)**

AUDIOSTREAM™ lets you wirelessly stream audio from this system to external Bluetooth speakers, earphones, headphones. In other words, AUDIOSTREAM™ is our branded name for the Bluetooth output feature. This is different from the Bluetooth® input function, which lets you play music from your smart device to this system. Thus, this device allows you to both wirelessly stream music into (i.e., Bluetooth In) or out of (i.e., Bluetooth Out) the device for your enjoyment.

- **BLUETOOTH®** – Stream music wirelessly from your smart device with Bluetooth connection.

- **BUILT IN STEREO SPEAKERS** -- Built in Stereo Speakers provides for an enjoyable playback experience with no other connections necessary. Plug this unit into the wall and you are ready to enjoy all the features.

- **USB RECORDING** – Digitally preserve your vinyl records and auxiliary input audio by recording directly to a USB drive.

- **MULTI-SOURCE PLAYBACK** – Enjoy music from multiple sources including FM radio, USB MP3 playback, and auxiliary input for external devices.

- **COMPLETE ALL-IN-ONE SYSTEM** – Features built-in stereo speakers, included 45 RPM adapter, and RCA outputs for larger sound systems.

SPECIFICATIONS

Product Name	Roxbury 8-in-1 Turntable Music Center with AudioStream™
Turntable Speed	33 ⅓, 45, 78 RPM
FM Frequency Range	88-108MHz
AM Frequency Range	530-1710KHz
Bluetooth Version	V5.4
Bluetooth® Transmission Distance	Up to 33 feet(10 Meters)*
Input	Aux In,USB, Bluetooth In
Output	AudioStream™ (Bluetooth Out), Line Out
Built-in Speakers	3"x2
Power Output	5Wx2
Power Source	AC/DC 100-240V 50-60Hz 12V/1A
Accessories Included	ETL Power Adaptor,45 RPM Adaptor, Aux-in Cable,3 Record Needles, Microfiber Cleaning Cloth, Felt Slipmat, User Manual, Quick Set-Up Guide, Warranty Card

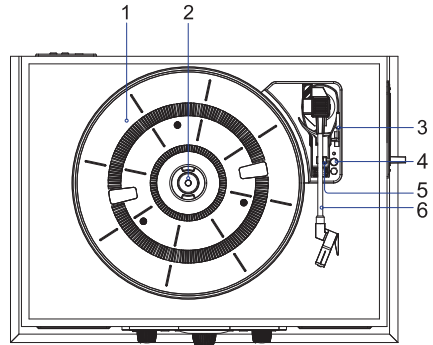
*Distance may vary depending on any objects or interference between devices.

SPECIFICATIONS AND ACCESSORIES ARE SUBJECT TO CHANGE WITHOUT NOTICE

PRODUCT OVERVIEW

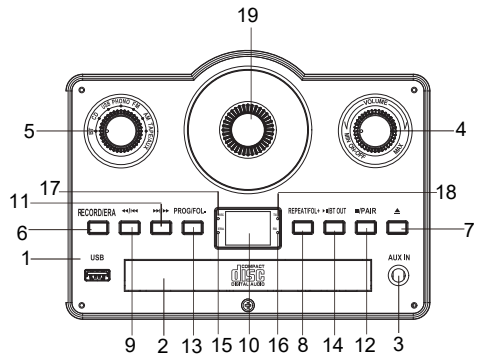
Turntable

1. Turntable Platter
2. Turntable Spindle
3. Cue Lever
4. Speed Selector
5. Hold Down Clip
6. Tone Arm



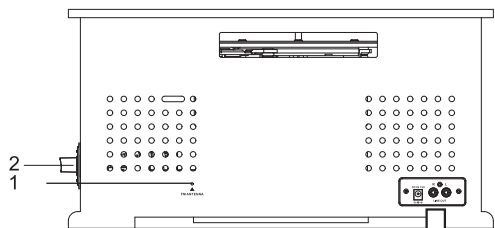
Front Panel

1. USB Port
2. CD Door
3. AUX IN Jack
4. Volume +/- Power
5. Function Knob
6. Record/Erase Button
7. Open/Close
8. Repeat /FOL+ Button
9. Rewind / Previous Button
10. Display
11. Fast Forward / Next Button
12. Stop / Pair Button
13. PROG/FOL-
14. Play/ Pause /BT Out Button
15. ERA Indicator
16. RX Indicator
17. REC Indicator
18. TX Indicator
19. Tuning Knob

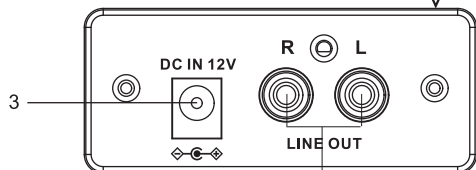


Back Panel

1. FM Antenna
2. Cassette Eject/Fast Forward Button



3. DC IN Jack
4. Line Out Jack



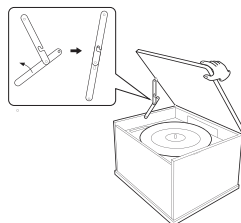
SET-UP & BASIC OPERATION

Essential Setup

1. Unpack the unit and remove all packaging materials.
2. Place the unit on a flat, level surface. Ensure the location is stable and free from vibration.
3. Connect the power adapter:
 - Plug the adapter into a 120V AC electrical outlet.
 - Plug the other end into the power input port on the back of the unit.
4. Extend the FM antenna.
5. Turn on the unit by rotating the Volume/Power knob clockwise until you hear a “click.”

To Open the Turntable Cover

1. Lift the turntable cover fully until it reaches the open position.
2. Lower the cover slightly until the support latch engages.
3. If the latch does not engage automatically, pull the lower support bar forward by hand until it locks into place.
4. The cover will now remain open.



To Close the Turntable Cover

1. Lift the cover fully until it reaches the open position.
2. The support latch will disengage.
3. Slowly lower the cover to the closed position.
4. If the latch does not disengage automatically, push the lower support bar outward by hand to release it.

CAUTION: Always hold the cover while closing to prevent finger injury.

Common Playback Control

- PLAY/PAUSE — Press to start or pause playback.
- Press \lll or \ggg to skip to the previous or next track.
- Search within a track: Press and hold \lll or \ggg to fast-reverse or fast-forward. Release the button when you reach the desired position.
- Select a folder: Press and hold PROG/FOL- or REPEAT/FOL+ to navigate to the previous or next folder.
- STOP/PAIR — Press to stop playback.

Note: These controls may not function in all playback modes.

Repeat Function

Press the REPEAT/FOL+ button:

Once — Repeat the current track.

Twice — Repeat the current folder.

Press and hold the REPEAT/FOL+ button to skip to the next file.

Note: The Repeat function is available in CD and USB modes only.

Program Function

This function enables you to set the playback of tracks into an ordered playlist.

1. Press the STOP button.
2. Press the PROG/FOL- button to activate program mode.
The display will show “P01” and begin blinking.
3. Press the \lll or \ggg buttons to select the desired track number.
4. Press the PROG/FOL- button again to confirm the selection.
5. Repeat Steps 3–4 to program additional tracks.
6. After programming all desired tracks, press the PLAY/PAUSE button to begin playback.
7. Press the STOP button once to stop playback.
8. Press the STOP button twice to clear the programmed tracks.

Notes

- This function is available in CD and USB modes only.
- Up to 20 tracks can be programmed.
- Turning off the unit or switching to another playback mode will automatically clear the programmed playlist.

RADIO OPERATION

1. Set the Function Knob to the **AM/FM** position to receive AM or FM signals.



2. Extend the FM antennae when you want to listen to FM stations.
3. Rotate the Tuning Knob to search for available stations.
4. Adjust the volume by rotating the VOLUME +/- Power knob.

You can improve the signal receiving strength by:

- Extending the FM Antenna to a higher position.
- Turn the unit to face different directions.
- Move the unit to a different place.
- Connect the FM Antenna to your outdoor antenna.

CD OPERATION

1. Set the Function Knob to the **CD** position.



2. Press the ▲OPEN/CLOSE button to open the disc tray.
3. Place your desired audio CD on the tray with its label side up.
4. Press the ▲OPEN/CLOSE button to close the tray.
5. The CD will start to play automatically.

Notes:

- Do not pull or push the disc tray manually.
- Ensure the disc is placed in the center of the disc tray with its label side up.
- Be sure the inserted disc is an Audio CD / MP3 CD, and not a DVD or any other type of disc.

AUX IN OPERATION

The AUX IN function allows you to play audio from an external device through the speakers of this unit.

1. Insert one end of the 3.5mm AUX IN Cable into the AUX IN Jack on the front control panel and the other end to your external audio device.



2. Set the Function knob to the TAPE/AUX position.



3. Start playing music on your external device.
4. Adjust the volume to your desired level.

USB OPERATION

1. Set the Function knob to the USB position.



2. Insert a USB device containing only .mp3 audio files into the USB port.
3. Playback will start automatically.
4. Use the volume and control buttons to adjust playback.

Note: Some USB devices may not be fully compatible, and control buttons may not function due to differences in manufacturing.

Recording to USB

You can record music from the unit onto a USB device in .mp3 format.

1. Insert a USB device into the USB port.
2. Play music in CD, AUX, Phono, or Tape mode.
3. Press the RECORD/ERASE button to start recording. The REC indicator will light up in the lower-left corner of the display to show that recording is in progress.
4. Press the STOP/PAIR button to stop recording. The display will show END.

Note: If playback does not start automatically, press the ◀▶ button on the unit to resume playback.

Erasing Files In the USB Device

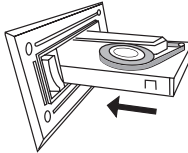
1. Insert a USB device into the USB port and play the song you want to delete.
2. Press and hold the **RECORD/ERASE** button for about two seconds. 'ERA' will light up and 'ONE' will appear on the display.
3. Press the **◀/▶** or **▶/▶▶** button to select:
 - a. ERA ONE - erase the current track
 - b. ERA FOLD - erase all the audio tracks in the entire folder
 - c. ERA ALL - erase all the audio tracks in the USB device
4. Press the **RECORD/ERASE** button again to confirm. The erasing process will start.
5. When all tracks and folders erased, 'NO' will be shown on display.

CASSETTE TAPE OPERATION

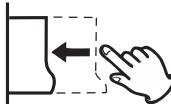
1. Set the Function Knob to **TAPE** position.



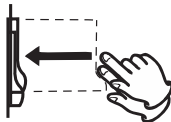
2. Insert a recorded cassette with its exposed side facing outwards. Push inwards until you hear a 'Click' sound. The cassette will be played automatically.



3. During playback, you can lightly press and hold the Eject/Fast Forward button to accelerate the playing speed. Release your finger when the part you want to listen to is found.



4. To stop playback and eject the tape, push the Eject/Fast Forward button all the way in until the tape is ejected.



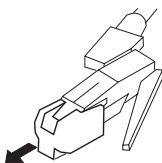
Note :Make sure to pull out the Aux in cable before playing the tape mode or the unit will switch to AUX mode automatically.

VINYL RECORD OPERATION

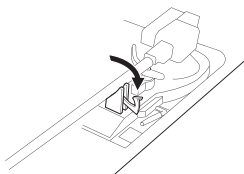
1. Press the Power Button to turn on the unit and open the cover.
2. Set the Function Knob to the 'PHONO' position.



3. Detach the stylus protector by pressing both sides and pulling straight in the direction shown.



4. Place a vinyl record on the Turntable by aligning the Turntable Spindle to the record hole.
5. Press the Speed Selector to 33 $\frac{1}{3}$, 45, or 78 to match the play speed of the record.
6. Unlock the Hold Down Clip.



7. Raise the Cue Lever to lift the Tone Arm off the Tone Arm support.
8. Gently move the Tone Arm to the edge of the record (or the starting point of a track).
9. Release the Cue Lever to put the Tone Arm onto the record. The Turntable will begin playback.
10. Turn the VOLUME +/- Power to adjust the volume. To pause/stop during playback, raise the Cue Lever to lift the Tone Arm off the record.
11. When finished listening:
 - a. Raise the Cue Lever to lift the Tone Arm off the record.
 - b. Move the Tone Arm to its support.
 - c. Lower the Cue Lever to release the Tone Arm.
 - d. Lock the Hold Down Clip.

Note:

- Put the 45 RPM Adapter across the Turntable Spindle first if playing a 45 RPM record.
- The speed indicator light: 33 $\frac{1}{3}$ Green, 45 Blue, 78 Cyan.
- After playing 33 $\frac{1}{3}$ RPM record, it will stop in about 90 seconds. For 45 RPM record, it is about 120 seconds. For 78 RPM record, it is about 150 seconds.

BLUETOOTH® OPERATION

With the Bluetooth® In function, you can play music from an external Bluetooth® device on the speakers of your RWRP-3000.

1. Set the Function Knob to the **BT** position. 'BT' and 'RX' will blink on the display.



2. Turn on your external Bluetooth device and pair it with the **'RWRP-3000'** device.
3. When the Bluetooth connection is established, you will hear a short confirmation sound from the unit, then 'BT' and 'RX' will stop blinking on the display.
4. Start to play your favorite music on the connected device.
5. Press and hold STOP/PAIR button to disconnect the current pairing.

AUDIOSTREAM™ (Bluetooth® Out)

You can stream music from your RWRP-3000 to external Bluetooth® speakers, soundbars, earbuds, or headphones.

1. Disable Bluetooth® on all nearby devices (e.g., amplifiers, soundbars, wireless headphones, smartphones, or tablets).
2. Play music in **CD, AUX, Phono, USB, Tuner, or Tape** mode.
3. Press and hold the **Play/Pause/BT OUT** button to activate the Bluetooth transmitter. The TX indicator will start blinking blue.
4. Power on your Bluetooth® speakers or headphones and enable pairing mode.
5. After a few seconds, the **TX** indicator will turn solid blue and you will hear a beep. This indicates that the turntable has successfully connected.
6. Adjust playback volume using either the unit's **volume knob** or your Bluetooth® device.
7. To turn off Bluetooth® output, press and hold the **Play/Pause/BT OUT** button again. The TX indicator will turn off.

CARE & MAINTENANCE

General Cleaning

- Always keep your turntable clean.
- If the unit's surface becomes dirty, wipe it with a soft, dry cloth or a cloth lightly dampened with mild liquid soap.
- Ensure any excess liquid is completely removed.
- Do not use thinner, benzene, alcohol, or other harsh chemicals, as these may damage the surface.
- Allow the surface to dry completely before using the unit.

Beware of Condensation

- Moving the unit or a record/disc from a cold to a warm environment can cause condensation.
- Vapor may condense on the internal mechanism, causing erratic operation or malfunction.
- To prevent damage, or if condensation occurs, turn off the unit and allow it to stabilize at room temperature for 1–2 hours.

Using Compact Discs (Compatible Discs)

- Conventional audio CDs
- Properly finalized CD-R and CD-RW discs

Handling Discs:

- Always place discs label side up on the tray. Only one side can be played or recorded.
- Remove discs from their cases by pressing the center and lifting carefully by the edges.
- Clean discs with a soft, dry cloth, wiping radially from the center hole outward.



How to remove the disc



How to hold the disc



How to clean the disc

Important Precautions:

- Do not use record sprays, anti-static sprays, benzene, thinner, or other chemicals to clean discs. These can permanently damage the disc surface.
- Always return discs to their cases after use to prevent dust, scratches, and laser skipping.
- Avoid exposing discs to direct sunlight, high humidity, or high temperatures. Heat can warp discs.
- Do not play discs that are warped, deformed, or damaged, as this can harm the unit.
- CD-R and CD-RW discs are more sensitive to heat and UV light than standard CDs. Store them away from sunlight and heat sources.
- Printable CD-R/CD-RW discs are not recommended; sticky labels may damage the unit.
- Do not stick papers, protective sheets, or sprays on discs.
- Write on the label side only with a soft, oil-based felt-tip pen; never use a ballpoint or hard-tipped pen.

Mechanism Safety:

- Do not use stabilizers; commercial CD stabilizers can damage the mechanisms.
- Do not use CDs with irregular shapes (octagonal, heart-shaped, business card size, etc.), as they can damage the unit.



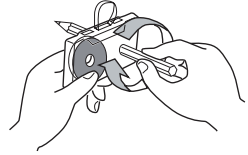
Additional Advice:

- For any doubts regarding the care and handling of CD-R/CD-RW discs, follow the precautions supplied with the disc or contact the disc manufacturer.

CARE & MAINTENANCE

Tape Handling

- Use your finger or a pencil to gently turn the cassette hub to remove any slack in the tape.
- Avoid touching the tape surface. Fingerprints attract dust and dirt.
- Do not drop cassettes or subject them to excessive shock.
- Do not use C-120 tapes. They are mechanically thin and may become entangled in the transport mechanism.
- Use your finger or a pencil to turn the cassette tape's hub and take up any slack tape.



Do NOT store tapes in the following locations:

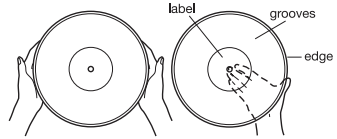
- On heaters, in direct sunlight, or in areas with high temperatures.
- Near speakers, televisions, amplifiers, or anywhere exposed to strong magnetic fields.
- In humid, dirty, or dusty environments.

Head Maintenance

- The tape head and tape path should be cleaned and demagnetized periodically.
- Use a cassette-type head cleaning tape and a cassette demagnetizer.
- Follow the instructions provided with the cleaning cassette and demagnetizer for proper use.
- On top of heaters, exposed to direct sunlight, or in any other places with high temperatures.

Maintaining Vinyl Records

- Do not touch the record grooves. Handle records only by the edges or label.
- Ensure your hands are clean. Skin oils can leave residue that degrades sound quality over time.
- Keep records free from dust. Store them in a cool, dry place.
- Always return records to their sleeves and jackets when not in use to prevent dust and scratches.
- Store records upright on their edges. Storing them horizontally may cause warping.
- Do not expose records to direct sunlight, high humidity, or high temperatures.
- Do not store records in a vehicle trunk.
- Maintain a stable storage environment with low humidity.
- If a record becomes dirty, gently wipe the surface in a circular motion using a soft anti-static cloth.



Stylus Replacement

Under normal use, the stylus typically lasts approximately 50 hours. However, replace the stylus as soon as you notice a decline in sound quality. Continued use of a worn stylus may damage records.

Note: Playing 78 RPM records accelerates stylus wear due to the higher playback speed.

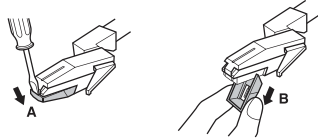
Caution

- Do not bend the stylus.
- Do not touch the needle to avoid injury.
- Turn off and unplug the unit before replacing the stylus.
- Keep out of reach of children.
- Handle carefully. A bent or broken stylus may damage records or cause malfunction.
- Do not expose the stylus to extreme heat.
- Contact a qualified service technician if you have difficulty replacing the stylus.

CARE & MAINTENANCE

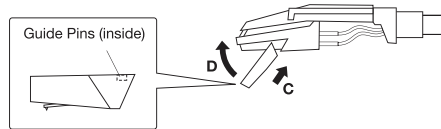
Removing the Stylus

1. Insert a flathead screwdriver at the tip of the stylus.
2. Gently push downward in direction "A" (as illustrated).
3. Pull the stylus outward in direction "B" to remove it.



Installing a New Stylus

1. Hold the stylus by its sides.
2. Insert the rear edge first by pressing in direction "C" (as illustrated).
3. Push upward in direction "D" until the stylus clicks and locks into place.



TROUBLESHOOTING GUIDE

If you experience a problem with this unit, please review the troubleshooting guide below before contacting your dealer or service center.

Function	Problem	Solution
General	No power	<ul style="list-style-type: none"> • Check the connection to the AC power source. • Ensure the outlet is not controlled by a wall switch. If it is, turn the switch on. • Verify the outlet has power by plugging in another device (such as a lamp or fan).
	No sound	<ul style="list-style-type: none"> • Adjust the volume • Ensure AUX IN cables are connected to the correct jack.
	The sound has interference	<ul style="list-style-type: none"> • The unit may be too close to a TV or other electrical appliance. • Relocate the unit away from the device or turn off the interfering appliance.
Radio	Cannot listen to any station or signal is weak	<ul style="list-style-type: none"> • Tune the station properly. • If a TV is nearby unit, turn it off. • Rotate the unit or reposition the antenna wire for the best reception.
Record Player	Will not play	<ul style="list-style-type: none"> • Turn the VOLUME KNOB clockwise. • Remove the stylus guard (white protective cover used for transport). • If the stylus is worn out, replace it. • Select the correct playback speed (33$\frac{1}{3}$, 45, or 78 RPM).
	Sound skips	<ul style="list-style-type: none"> • Place the unit on a stable, level surface to prevent vibration. • Ensure the unit is level front-to-back and side-to-side. • Clean the record surface. • Do not use scratched, warped, or damaged records.
CD Player	Will not play	<ul style="list-style-type: none"> • Turn the VOLUME knob clockwise and set the FUNCTION knob to CD. • Load the disc with the playback side facing down. • Clean the disc if it is dirty. • Do not use blank discs; load a pre-recorded disc. • CD-R/CD-RW discs must be finalized before playback.
Bluetooth®	Will not play	<ul style="list-style-type: none"> • The device may not be paired correctly. • Turn Bluetooth® OFF on both devices, then turn it ON again and re-pair.
Cassette Player	Button does not work	<ul style="list-style-type: none"> • Ensure the cassette tape is inserted correctly and securely
	Sound is distorted	<ul style="list-style-type: none"> • Clean and demagnetize the tape heads. • Use a standard (normal) cassette tape.
AUX In	No Sound	<ul style="list-style-type: none"> • Confirm the external device is functioning properly. • Ensure the AUX IN cable is securely connected and not damaged. • Increase the volume on both the unit and the external device.

FCC NOTICE

This device complies with Part 15 of the FCC Rules. Operation is subject to the following two conditions: (1) this device may not cause harmful interference, and (2) this device must accept any interference received, including that may cause undesired operation.

NOTE: This equipment has been tested and found to comply with the limits for a Class B digital device, pursuant to Part 15 of the FCC Rules. These limits are designed to provide reasonable protection against harmful interference in a residential installation. This equipment generates, uses, and can radiate radio frequency energy and, if not installed and used in accordance with the instructions, may cause harmful interference to radio communications. However, there is no guarantee that interference will not occur in a particular installation. If this equipment does cause harmful interference to radio or television reception, which can be determined by turning the equipment on and off, the user is encouraged to try to correct the interference by one or more of the following measures:

- Reorient or relocate the receiving antenna.
- Increase the separation between the equipment and receiver.
- Connect the equipment into an outlet on a circuit different from that to which the receiver is connected.
- Consult the dealer or an experienced radio/TV technician for help.

WARNING: Any changes or modifications not expressly approved by the party responsible for compliance could void the user's authority to operate this equipment.

The device must not be collocated or operating in conjunction with any other antenna or transmitter.

To maintain compliance with the FCC's RF exposure guidelines, place the product at least 20cm from nearby persons.

CAUTION ON MODIFICATIONS

Any changes or modifications not expressly approved by the grantee of this device may void the authority granted by the FCC to operate this equipment. Electric and electronic equipment contains materials, components and substances that can be hazardous to your health and the environment, if the waste material (discarded electric and electronic equipment) is not handled correctly. Electric and electronic equipment is marked with the crossed-out trash can symbol, seen the right side. This symbol signifies that electric and electronic equipment should not be disposed of with other household waste but should be disposed of separately. All cities have established collection points, where electric and electronic equipment can either be submitted free of charge at recycling stations and other collection sites or be collected from the households. Additional information is available at the technical department of your city.



SUPPORT

We do our best to offer high quality products to our customers. If you experience any issues or problems with your product, please contact customer support as many issues can be quickly resolved.

If you have problems with your device, please consult the instructions in this manual. Please also visit us on the web at www.victoraudio.com to get up to the minute news, alerts, and documentation for your device. Please contact RCA VICTOR Customer Support for assistance.

RCA VICTOR Technical Support

2320 E. 49th Street

Vernon, CA 90058

Email: support@victoraudio.com

Phone: (866) 411-6292

Made in China

This product has been manufactured and sold under the responsibility of NAXA ELECTRONICS INC. [RCA VICTOR and the RCA VICTOR Logo]/[VICTOR and the DOG & GRAMOPHONE Logo] are trademarks used under license by NAXA ELECTRONICS INC.

All other products, services, companies, trademarks, trade or product names and logos referenced herein are the property of their respective owners.

